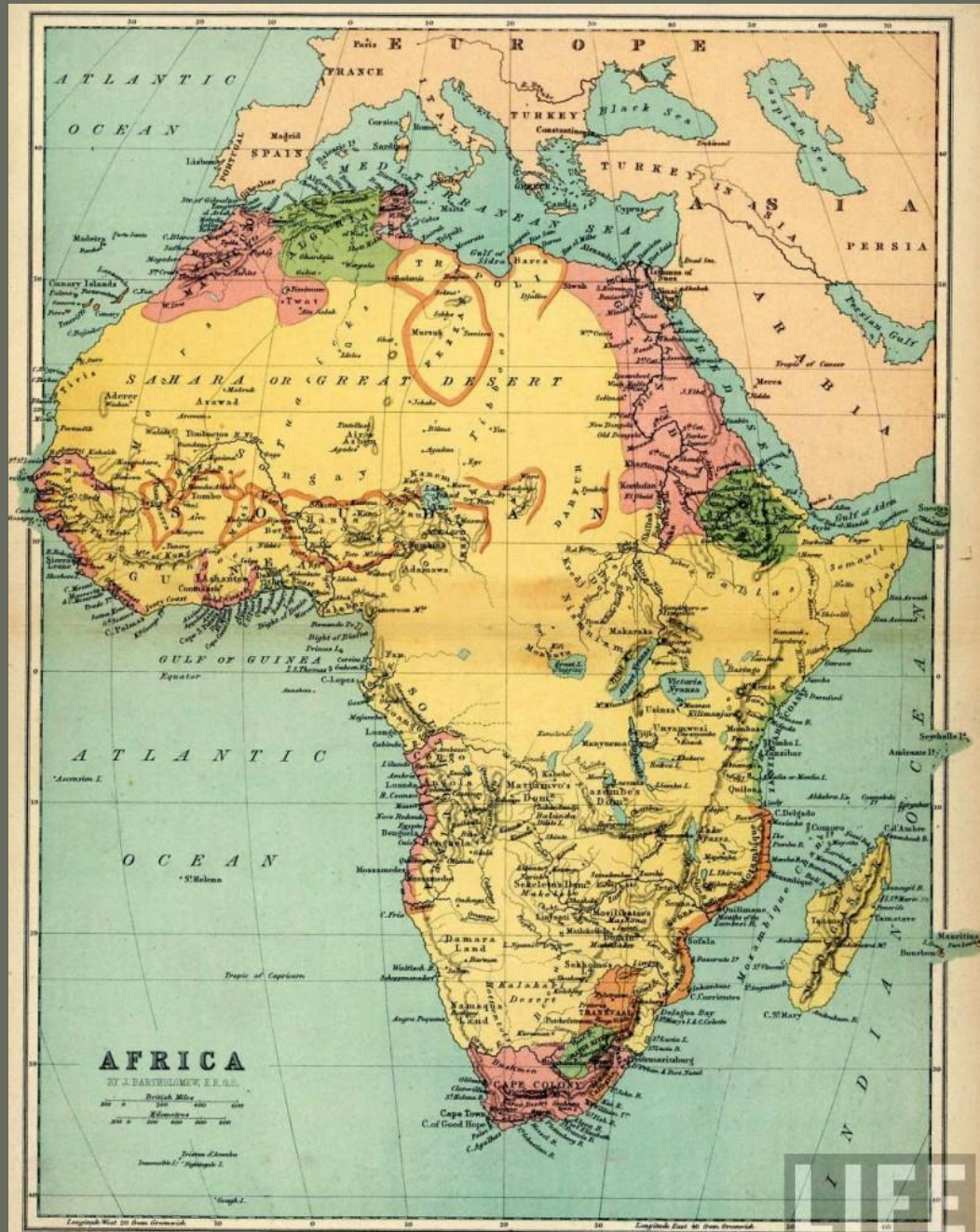
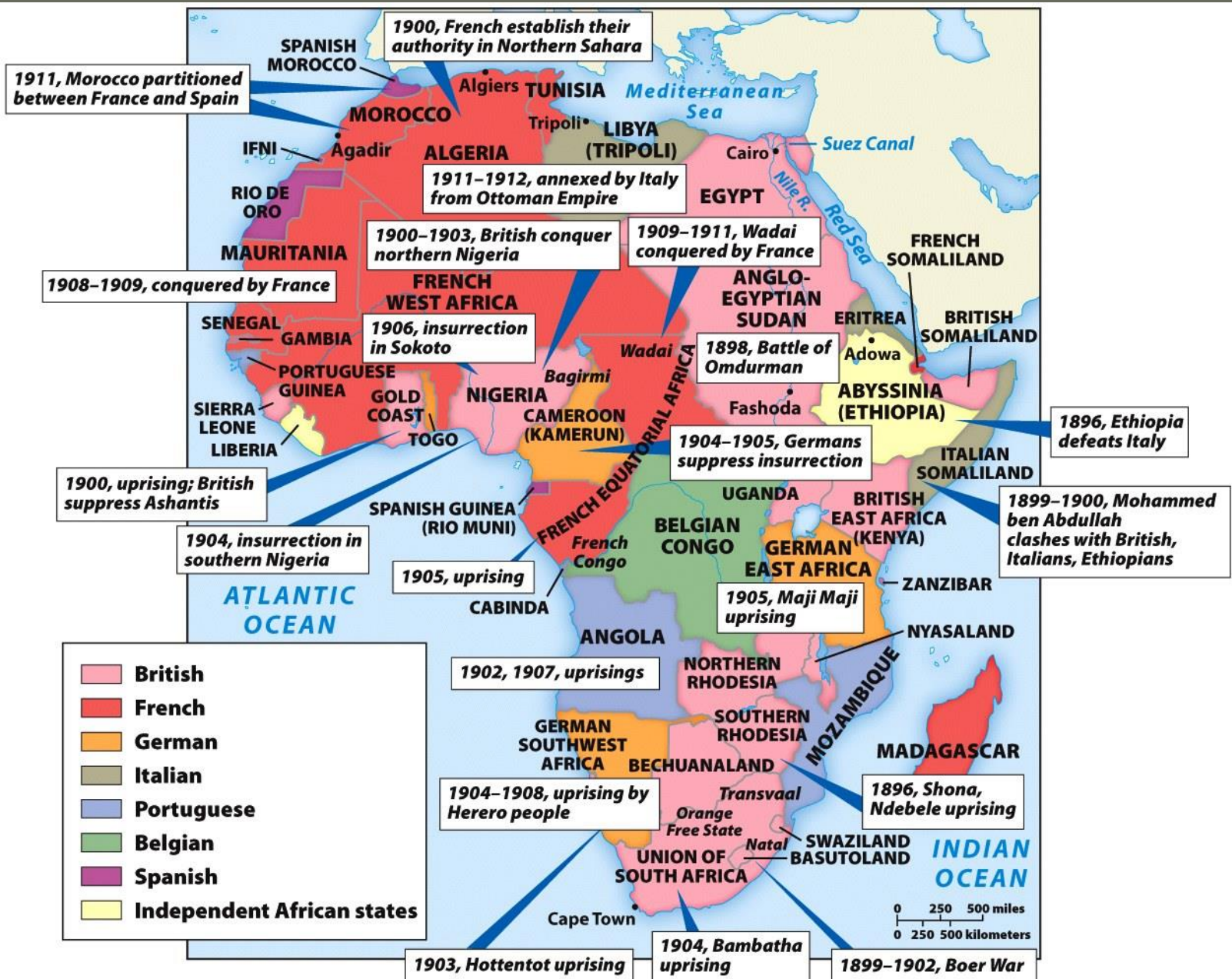


HENRY STANLEY

- Point of View:
- British Explorer







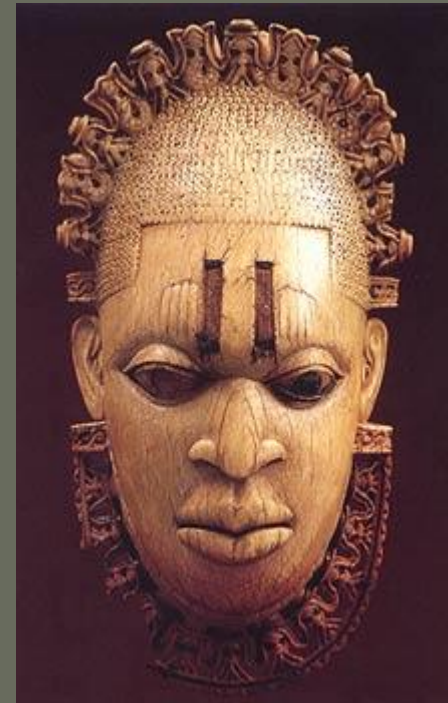
Map 20-2
Ways of the World, First Edition
 © 2009 Bedford/St.Martin's

CONTACT IN THE CONGO

Henry Stanley
British Explorer



King Mojimba
African Tribal Ruler



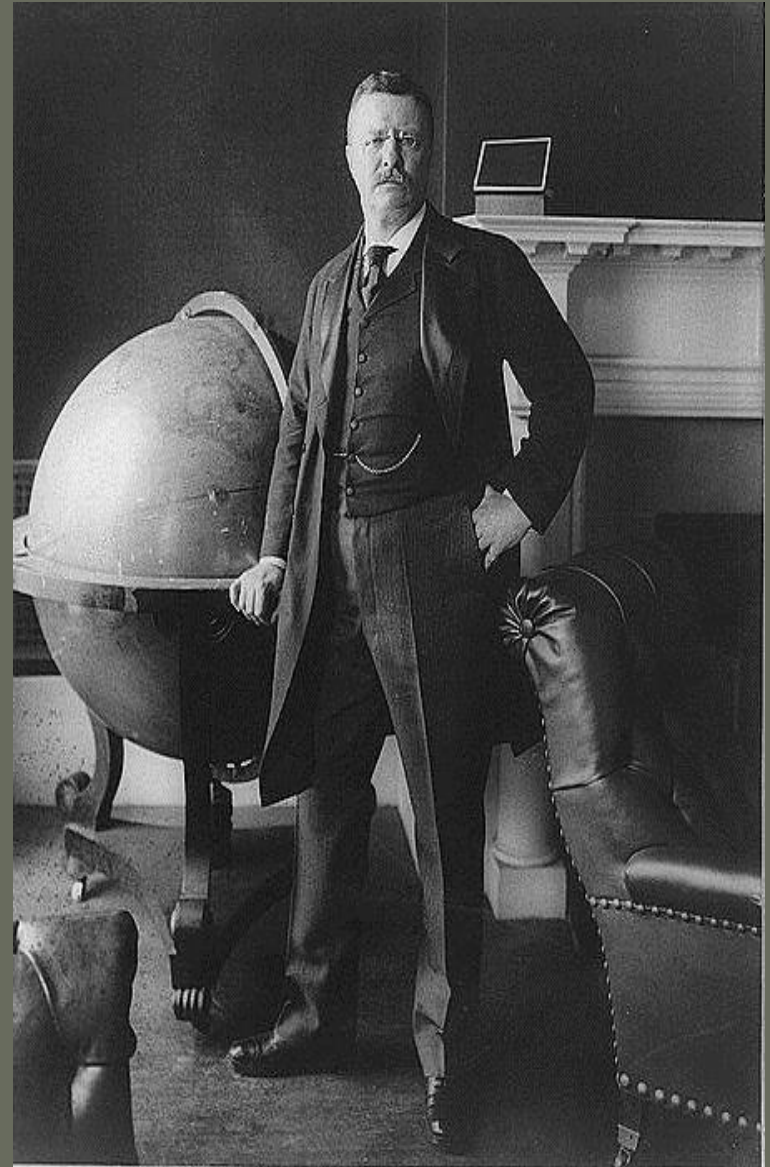
White Man's Burden

- Take up the White Man's Burden-
 - Send forth the best ye breed-Go bind your sons to exile
To serve your captives' need:
To wait in heavy harness,
On fluttered folk and wild-
Your new-caught sullen
peoples,
Half-devil and half-child.



Theodore Roosevelt

- “There comes a time in the life of a nation, as in the life of an individual, when it must face great responsibilities, whether it will or no. We have now reached that time. . .The guns of our warships in the tropic seas of the West and the remote East have awakened us to the knowledge of new duties.’



Rev. Henry Van Dyke



- “How can we pass by the solemn and majestic claim of our D. of I., that ‘government derives its powers from the consent of the governed’? How can we face the world as a union of free states holding vassal states in subjection, a mighty mongrel nation in which a republic is tied to an empire, and democracy bears children not to be distinguished from the offspring of absolutism?”

Queen Liliuokalani (1838-1917)

- “Some of my subjects, aided by aliens, have renounced their loyalty and revolted against the constitution and government of my kingdom. . . Upon receiving incontestable proof that His Excellency the Minister of the United States aided and abetted their unlawful movements, and caused US troops to be landed for that purpose, I submitted to force.”

